

✚ Advance Performance

✚ Great Memory

✚ Colorful Display

✚ Application Software



PRODUCT PARAMATER

Parameter

Model	Rec-Tech-8-CH-RS
Channels input	12 Channels (Max)
Channels output	
Dimension	184*154*76
Accuracy	±0.2%FS
Sampling period	1 Second
Response time	≤0.3S
Storage capacity	The capacity of the internal Flash memory is 64 M Byte
Communication	10M Ethernet standard RJ45 interface, RS485/RS232
Alarm output	12 Channels alarm output
Feed output	Load current ≤ 200 mA
Power Supply	AC85~264V
Frequency	50/60Hz
Power consumption	≤15W
Working temperature	-10~50°C
Humidity	10~90% (No condensation)

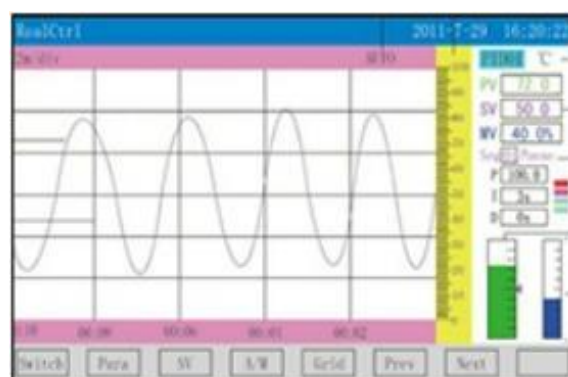
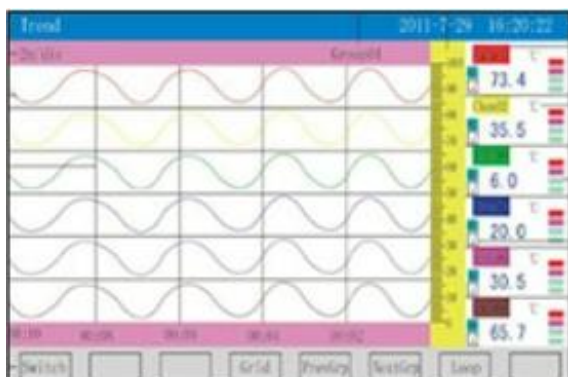
PRODUCT PARAMATER

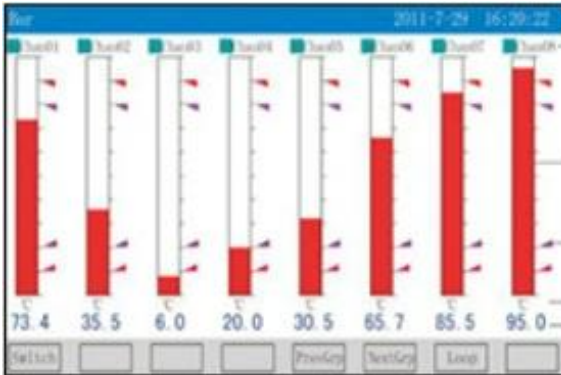
Data Collection Upload



PRODUCT PARAMATER

Multifunctional Display





History Curve

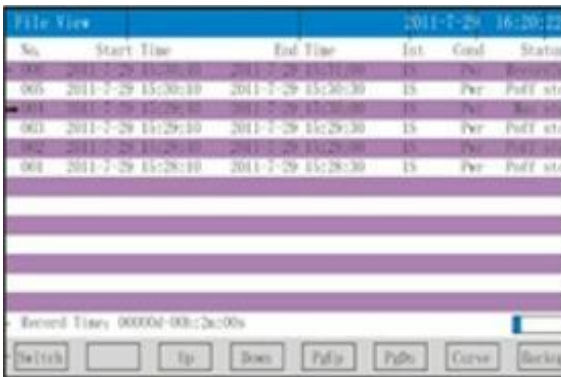


Alarm List display showing a table of alarm events. The table has columns: No., Chan, Name, Alarm Time, Clear Time, and Type. The data is as follows:

No.	Chan	Name	Alarm Time	Clear Time	Type
001	01	Chan01	2011-7-29 16:00:22	2011-7-29 16:00:22	0
002	01	Chan01	2011-7-29 16:01:22	2011-7-29 16:01:22	0
003	01	Chan01	2011-7-29 16:02:22	2011-7-29 16:02:22	0
004	01	Chan01	2011-7-29 16:03:22	2011-7-29 16:03:22	0
005	01	Chan01	2011-7-29 16:04:22	2011-7-29 16:04:22	0
006	01	Chan01	2011-7-29 16:05:22	2011-7-29 16:05:22	0
007	01	Chan01	2011-7-29 16:06:22	2011-7-29 16:06:22	0
008	01	Chan01	2011-7-29 16:07:22	2011-7-29 16:07:22	0
009	01	Chan01	2011-7-29 16:08:22	2011-7-29 16:08:22	0
000	01	Chan01	2011-7-29 16:09:22	2011-7-29 16:09:22	0
001	01	Chan01	2011-7-29 16:10:22	2011-7-29 16:10:22	0
002	01	Chan01	2011-7-29 16:11:22	2011-7-29 16:11:22	0
000	01	Chan01	2011-7-29 16:12:22	2011-7-29 16:12:22	0

The display includes a 'Switch' button and a 'Loop' button.

Alarm List

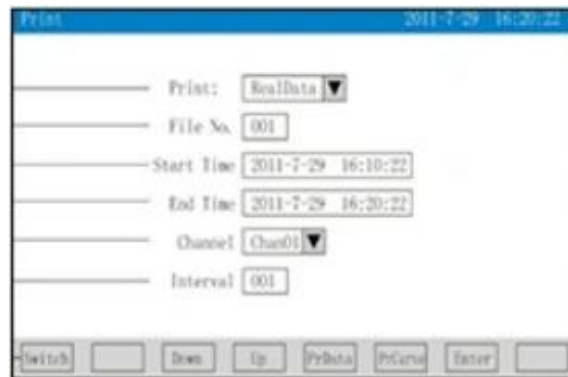


File List display showing a table of file records. The table has columns: No., Start Time, End Time, Int., Cond., and Status. The data is as follows:

No.	Start Time	End Time	Int.	Cond.	Status
000	2011-7-29 15:25:10	2011-7-29 15:25:10	15	Per	Full sta
005	2011-7-29 15:26:10	2011-7-29 15:26:10	15	Per	Full sta
001	2011-7-29 15:27:10	2011-7-29 15:27:10	15	Per	Full sta
003	2011-7-29 15:28:10	2011-7-29 15:28:10	15	Per	Full sta
002	2011-7-29 15:29:10	2011-7-29 15:29:10	15	Per	Full sta
004	2011-7-29 15:30:10	2011-7-29 15:30:10	15	Per	Full sta

The display includes a 'Switch' button and a 'Loop' button.

File List

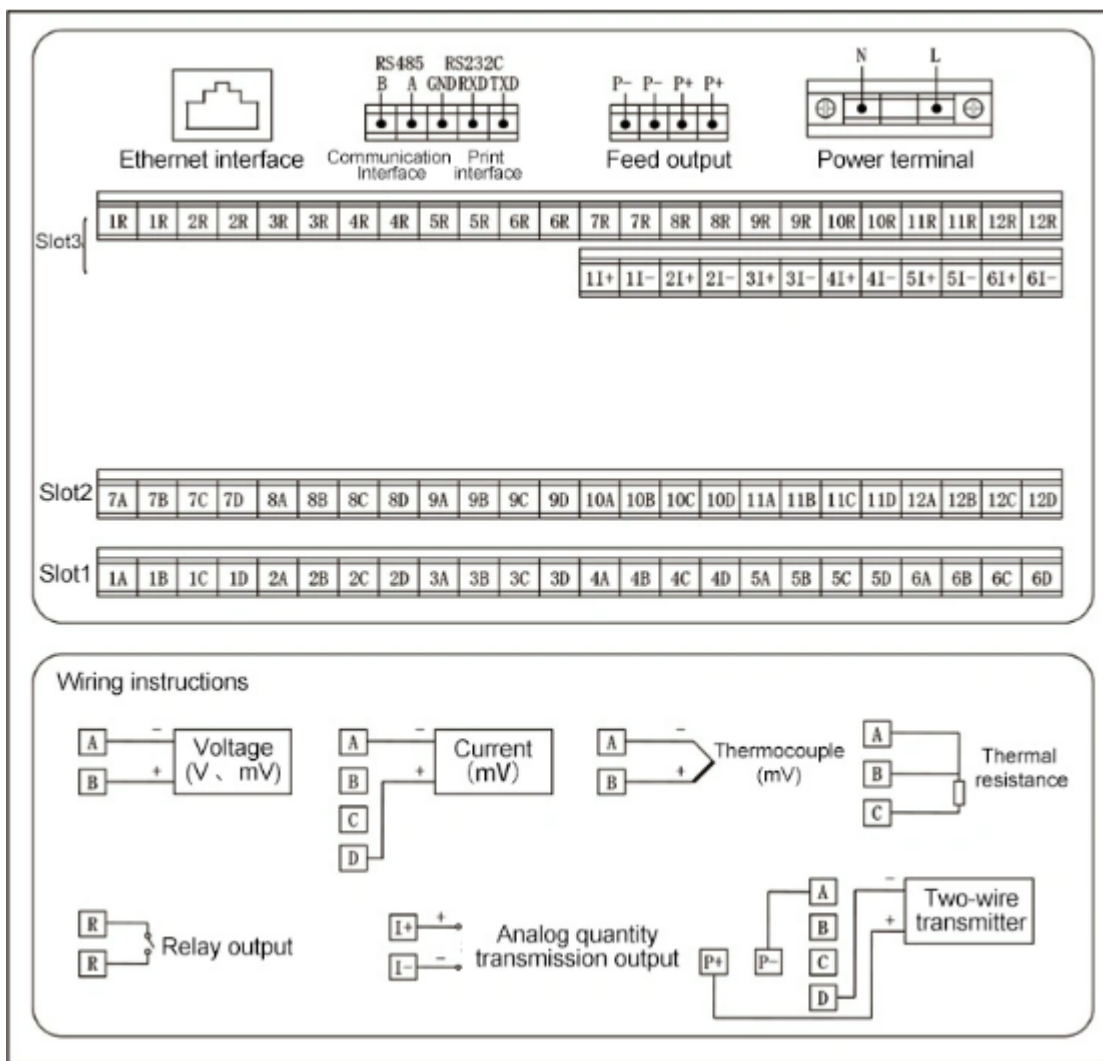


Menu for Printing display showing a form for printing settings. The form includes fields for: Print (RealData), File No. (001), Start Time (2011-7-29 16:10:22), End Time (2011-7-29 16:20:22), Channel (Chan01), and Interval (001). The display includes a 'Switch' button and a 'Loop' button.

Menu for Printing

PRODUCT PARAMATER

Wiring



PRODUCT PARAMATER

Application



Collect, display, record, control, remotely transmit, communicate, and print various signals such as temperature, pressure, liquid level, speed, etc.

Widely used in many fields such as electric power, petrochemical, metallurgy, light industry, pharmaceutical aviation, etc.

